

**VALVOLE COMPLEMENTARI,  
RACCORDI ED ACCESSORI**  
*ADDITIONAL VALVES,  
FITTINGS AND ACCESSORIES*

## REGOLATORI DI FLUSSO IN POLIMERO SERIE "RR" - POLYMER FLOW REGULATORS "RR" SERIES

### RRSC ...

Regol. di flusso per cil.  
Flow regulator for cylinders

Codice - Code		
Mod.	F	T
RRSC	1/8	4
RRSC	1/4	4
RRSC	1/8	6
RRSC	1/4	6
RRSC	3/8	6
RRSC	1/2	6
RRSC	1/8	8
RRSC	1/4	8
RRSC	3/8	8
RRSC	1/2	8
RRSC	1/8	10
RRSC	1/4	10
RRSC	3/8	10
RRSC	1/2	10
RRSC	1/4	12
RRSC	3/8	12
RRSC	1/2	12



Fil. GAS conica ISO 7.1 -  
Conical GAS thread ISO 7.1

### RRSV ...

Regol. di flusso per valv.  
Flow regulator for valves

Codice - Code		
Mod.	F	T
RRSV	1/8	4
RRSV	1/4	4
RRSV	1/8	6
RRSV	1/4	6
RRSV	3/8	6
RRSV	1/2	6
RRSV	1/8	8
RRSV	1/4	8
RRSV	3/8	8
RRSV	1/2	8
RRSV	1/8	10
RRSV	1/4	10
RRSV	3/8	10
RRSV	1/2	10
RRSV	1/4	12
RRSV	3/8	12
RRSV	1/2	12



Fil. GAS conica ISO 7.1 -  
Conical GAS thread ISO 7.1

### RRGSC .. ..

Regol. di flusso per cil.  
Flow regulator for cylinders

Codice - Code		
Mod.	F	T
RRGSC	M5	4
RRGSC	1/8	4
RRGSC	1/4	4
RRGSC	M5	6
RRGSC	1/8	6
RRGSC	1/4	6
RRGSC	3/8	6
RRGSC	1/2	6
RRGSC	1/8	8
RRGSC	1/4	8
RRGSC	3/8	8
RRGSC	1/2	8
RRGSC	1/8	10
RRGSC	1/4	10
RRGSC	3/8	10
RRGSC	1/2	10
RRGSC	1/4	12
RRGSC	3/8	12
RRGSC	1/2	12



Fil. GAS cilind. ISO 228 -  
Cylind. GAS thread ISO 228

### RRGSV .. ..

Regol. di flusso per valv.  
Flow regulator for valves

Codice - Code		
Mod.	F	T
RRGSV	M5	4
RRGSV	1/8	4
RRGSV	1/4	4
RRGSV	M5	6
RRGSV	1/8	6
RRGSV	1/4	6
RRGSV	3/8	6
RRGSV	1/2	6
RRGSV	1/8	8
RRGSV	1/4	8
RRGSV	3/8	8
RRGSV	1/2	8
RRGSV	1/8	10
RRGSV	1/4	10
RRGSV	3/8	10
RRGSV	1/2	10
RRGSV	1/4	12
RRGSV	3/8	12
RRGSV	1/2	12

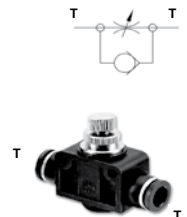


Fil. GAS cilind. ISO 228 -  
Cylind. GAS thread ISO 228

### RRRI .. ..

Regol. di flusso in linea  
Flow regulator

Codice - Code	
Mod.	T
RRRI	4
RRRI	6
RRRI	8
RRRI	10
RRRI	12

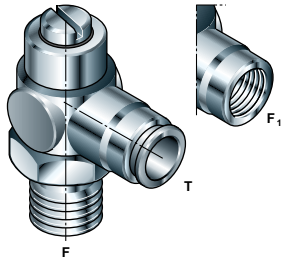


### Dati tecnici - Technical specification

Corpo: ..... ottone nichelato  
 Pinza di tenuta: ..... acciaio  
 O-ring: ..... NBR  
 Filettature: ..... gas conica ISO 7.1 preteflonata  
 ..... gas cilindrica con OR ISO 228  
 Fluidi applicabili: ..... aria  
 Temperatura di esercizio: ..... 0 °C ÷ + 60 °C  
 Tubi da utilizzare: ..... poliammide (PA) - poliuretano (PU)

Body: ..... brass nickel  
 Lock claw: ..... stainless steel  
 O-ring: ..... NBR  
 Threads: ..... conical gas thread ISO 7.1 with teflon  
 ..... cylindrical gas thread ISO 228 with OR  
 Applicable fluids: ..... air  
 Working temperature: ... 0 °C ÷ + 60 °C  
 Tubes used: ..... polyamide (PA) - polyurethane (PU)

## REGOLATORI DI FLUSSO IN OTTONE SERIE "D" - BRASS FLOW REGULATORS "D" SERIES



Unidirezionale in scarico, codice DS..  
Unidirectional to discharge, code DS..



Unidirezionale in mandata, codice DM..  
Unidirectional to inlet, code DM..



Versione bidirezionale, codice DB..  
Bidirectional type, code DB..



.. S ..

Regol. di flusso standard  
Standard speed regulator

Codice - Code								
Serie DS..	Serie DM..	Serie DB..	F	T	F <sub>1</sub>	A → B	A ← B	C ↔ D
DSS8T4	DMS8T4	DBS8T4	1/8	4	-	0 ± 160	180	0 ± 160
DSS8T5	DMS8T5	DBS8T5	1/8	5	-	0 ± 280	300	0 ± 280
DSS8T6	DMS8T6	DBS8T6	1/8	6	-	0 ± 500	500	0 ± 500
DSS8T8	DMS8T8	DBS8T8	1/8	8	-	0 ± 500	500	0 ± 500
DSS4T6	DMS4T6	DBS4T6	1/4	6	-	0 ± 500	500	0 ± 500
DSS4T8	DMS4T8	DBS4T8	1/4	8	-	0 ± 600	600	0 ± 600
DSS4T10	DMS4T10	DBS4T10	1/4	10	-	0 ± 650	650	0 ± 650
DSS88	DMS88	DBS88	1/8	-	1/8	0 ± 500	500	0 ± 500
DSS44	DMS44	DBS44	1/4	-	1/4	0 ± 600	600	0 ± 600
DSS33	DMS33	DBS33	3/8	-	3/8	0 ± 1000	1000	0 ± 1000
DSS22	DMS22	DBS22	1/2	-	1/2	0 ± 1300	1000	0 ± 1000

.. M ..

Mini-regolatore di flusso  
Speed mini-regulator

Codice - Code								
Serie DS..	Serie DM..	Serie DB..	F	T	F <sub>1</sub>	A → B	A ← B	C ↔ D
DSM5T4	DMM5T4	-	M5	4	-	0 ± 60	100	0 ± 60
DSM8T4	DMM8T4	DBM8T4	1/8	4	-	0 ± 60	100	0 ± 60
DSM8T5	DMM8T5	DBM8T5	1/8	5	-	0 ± 60	100	0 ± 60
DSM55	DMM55	-	M5	-	M5	0 ± 60	100	0 ± 60

.. G ..

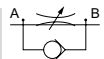
Regol. di flusso gigante  
Giant speed regulator

Codice - Code								
Serie DS..	Serie DM..	Serie DB..	F	T	F <sub>1</sub>	A → B	A ← B	C ↔ D
DSG4T8	DMG4T8	-	1/4	8	-	0 ± 900	1000	-
DSG4T10	DMG4T10	-	1/4	10	-	0 ± 1000	1000	-
DSG3T8	DMG3T8	-	3/8	8	-	0 ± 900	1000	-
DSG3T10	DMG3T10	-	3/8	10	-	0 ± 1000	1000	-

## REGOLATORI DI FLUSSO DI LINEA SERIE "RF" - THREAD FLOW REGULATORS "RF" SERIES

RF..5

Mini regolatore di flusso  
Mini flow regulator

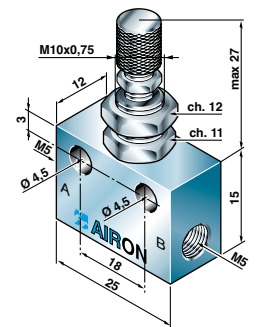


Regol. di flusso UNIDIREZIONALE codice RFU..  
UNIDIRECTIONAL flow regulator code RFU..



Regol. di flusso BIDIREZIONALE codice RFB..  
BIDIRECTIONAL flow regulator code RFB..

Mod.	F	Codice - Code		
		A → B	A ← B	C ↔ D
RFU5	M5	0±60	130	0±60
RFB5	M5	0±60	130	0±60



RF .. ..

Regolatore di flusso  
Flow regulator

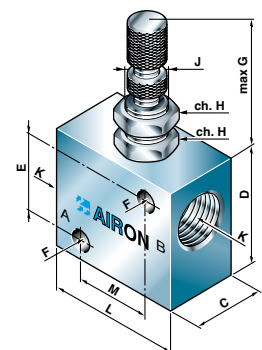


Regol. di flusso UNIDIREZIONALE codice RFU..  
UNIDIRECTIONAL flow regulator code RFU..



Regol. di flusso BIDIREZIONALE codice RFB..  
BIDIRECTIONAL flow regulator code RFB..

Mod.	F	Codice - Code												
		A → B	A ← B	C ↔ D	K	J	C	D	E	F	G	H	L	M
RFU8	1/8	0±120	450	0±210	1/8	M10x0,75	17	22	13	4,5	35	15	32	23
RFU4	1/4	0±300	600	0±300	1/4	M12x0,75	22	32	22	4,5	35	15	40	30
RFU3	3/8	0±600	1100	0±500	3/8	M18x1	27	42	27	6,5	43	24	56	43
RFU2	1/2	0±600	1400	0±500	1/2	M18x1	27	42	27	6,5	43	24	56	43
RFB8	1/8	0±120	450	0±210	1/8	M10x0,75	17	22	13	4,5	35	15	32	23
RFB4	1/4	0±300	600	0±300	1/4	M12x0,75	22	32	22	4,5	35	15	40	30
RFB3	3/8	0±600	1100	0±500	3/8	M18x1	27	42	27	6,5	43	24	56	43
RFB2	1/2	0±600	1400	0±500	1/2	M18x1	27	42	27	6,5	43	24	56	43

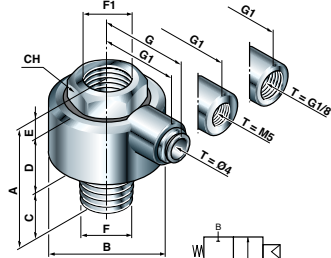


## VALVOLE AUTOMATICHE E SERVOVALVOLE - AUTOMATIC VALVES AND SERVOVALVES

### VBR ..

Servovalvola di blocco  
Block servovalve

Mod.	Codice - Code	
	F	T
VBR84	1/8	4
VBR44	1/4	4
VBR34	3/8	4
VBR85	1/8	M5
VBR45	1/4	M5
VBR35	3/8	M5
VBR88	1/8	1/8
VBR48	1/4	1/8
VBR38	3/8	1/8



Dimensioni di ingombro

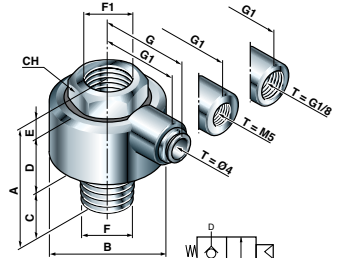
Overall dimensions

F	F1	A	B	C	D	E	G	G1	CH
G1/8	G1/8	36,5	30	10	20,5	6	30,5	25	17
G1/8	G1/4	42,5	37	11,5	25,5	5,5	33	28,5	22
G1/8	G3/8	52,5	46	14	32,5	6	46	32	30

### VBS ..

Servovalvola di blocco unidirezionale  
Unidirectional block servovalve

Mod.	Codice - Code	
	F	T
VBS84	1/8	4
VBS44	1/4	4
VBS34	3/8	4
VBS85	1/8	M5
VBS45	1/4	M5
VBS35	3/8	M5
VBS88	1/8	1/8
VBS48	1/4	1/8
VBS38	3/8	1/8



Sezione di passaggio

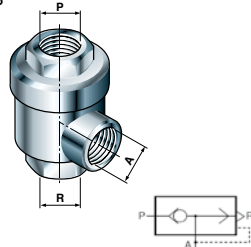
Change-over section

Ø	mm <sup>2</sup>	NI/min; 6 Bar		
		A ↔ B	D → C	C → D
5	19,6	650	650	650
7,5	44,2	1000	700	1000
9	63,6	1900	900	1900

### SRT ..

Valvola di scarico rapido  
Quick-exhaust valve

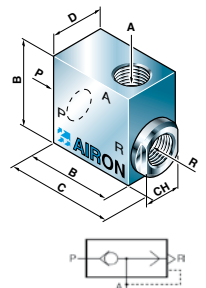
Mod.	Codice - Code	
	A-P-R	
SRT8	1/8	
SRT4	1/4	
SRT3	3/8	
SRT2	1/2	
SRT34	3/4	
SRT1	1"	



### SRB ..

Valvola di scarico rapido da barra  
Barrel quick-exhaust valve

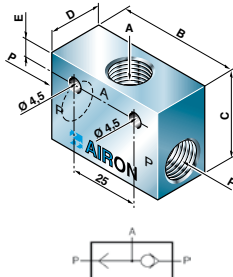
Mod.	A-P-R	Codice - Code			
		B	C	D	CH
SRB8	1/8	35	40	25	20
SRB4	1/4	35	40	25	20
SRB3	3/8	45	50	30	26
SRB2	1/2	45	50	30	26



### VSC ..

Valvola selettiva di circuito  
Shuttle valve

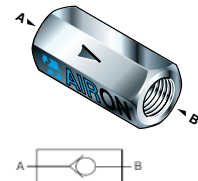
Mod.	Codice - Code				
	A-P	B	C	D	E
VSC8	1/8	36	20	15	4
VSC4	1/4	43	25	20	6,5



### VU ..

Valvola unidirezionale  
Unidirectional valve

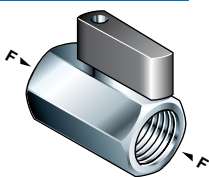
Mod.	Codice - Code	
	A-B	
VU5	M5	
VU8	1/8	
VU4	1/4	
VU3	3/8	
VU2	1/2	



## VALVOLE A SFERA ED A CORSOIO - BALL VALVES AND SLIDE VALVES

### VFF ..

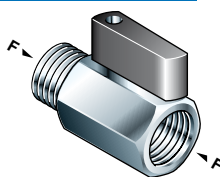
Valvole a sfera F.F.  
Ball valves F.F.



Mod.	Codice - Code	
	F	BOX
VFF 8	1/8	25
VFF 4	1/4	25
VFF 3	3/8	10
VFF 2	1/2	10
VFF 34	3/4	10

### VFM ..

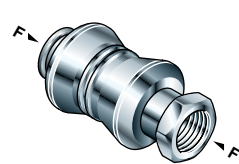
Valvole a sfera M.F.  
Ball valves M.F.



Mod.	Codice - Code	
	F	BOX
VFM 8	1/8	25
VFM 4	1/4	25
VFM 3	3/8	10
VFM 2	1/2	10
VFM 34	3/4	10

### RC ..

Valvola a corsoio F.F.  
Slide valve F.F.



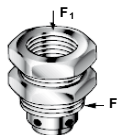
Mod.	Codice - Code	
	F	BOX
RC 8	1/8	25
RC 4	1/4	25
RC 3	3/8	10
RC 2	1/2	10

## REGOLATORI DI SCARICO E SILENZIATORI - EXHAUST REGULATORS AND SILENCERS

### RS ...

Regolatore di scarico  
Exhaust regulator

Codice - Code		
Mod.	F	F <sub>1</sub>
RS.8	1/8	1/8
RS.4	1/4	1/8
RS.3	3/8	1/8
RS.2	1/2	1/4

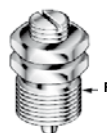


Fil. GAS cilind. ISO 228 -  
Cylind. GAS thread ISO 228

### RSP ...

Reg. di scarico di precis.  
Precision exhaust regulator

Codice - Code	
Mod.	F
RSP.8	1/8
RSP.4	1/4



Fil. GAS cilind. ISO 228 -  
Cylind. GAS thread ISO 228

### RSS ...

Reg. di scarico silenziato  
Silenced exhaust regulator

Codice - Code	
Mod.	F
RSS.8	1/8
RSS.4	1/4
RSS.3	3/8
RSS.2	1/2
RSS.34	3/4
RSS.1	1"



Fil. GAS cilind. ISO 228 -  
Cylind. GAS thread ISO 228

### RSSV ...

Reg. di scarico silenziato  
Silenced exhaust regulator

Codice - Code	
Mod.	F
RSSV.5	M5
RSSV.8	1/8
RSSV.4	1/4
RSSV.3	3/8
RSSV.2	1/2
RSSV.34	3/4
RSSV.1	1"



Fil. GAS cilind. ISO 228 -  
Cylind. GAS thread ISO 228

### SNS ...

Silenz. nylon "statico"  
Static nylon silencer

Codice - Code	
Mod.	F
SNS.8	1/8
SNS.4	1/4
SNS.3	3/8
SNS.2	1/2
SNS.34	3/4
SNS.1	1"



Fil. GAS cilind. ISO 228 -  
Cylind. GAS thread ISO 228

### SND ...

Silenz. nylon "dinamico"  
Dynamic nylon silencer

Codice - Code	
Mod.	F
SND.8	1/8
SND.4	1/4
SND.3	3/8
SND.2	1/2
SND.34	3/4
SND.1	1"



Fil. GAS cilind. ISO 228 -  
Cylind. GAS thread ISO 228

### SBE ...

Sil. bronzo testa esag.  
Brass hexagonal head silencer

Codice - Code	
Mod.	F
SBE.5	M5
SBE.8	1/8
SBE.4	1/4
SBE.3	3/8
SBE.2	1/2
SBE.34	3/4
SBE.1	1"



Fil. GAS cilind. ISO 228 -  
Cylind. GAS thread ISO 228

### SBO ...

Silenziatore in bronzo  
Brass silencer

Codice - Code	
Mod.	F
SBO.5	M5
SBO.8	1/8
SBO.4	1/4
SBO.3	3/8
SBO.2	1/2
SBO.34	3/4
SBO.1	1"



Fil. GAS cilind. ISO 228 -  
Cylind. GAS thread ISO 228

### SBA ...

Silenz. bronzo base esag.  
Brass hexagonal base silencer

Codice - Code	
Mod.	F
SBA.5	M5
SBA.8	1/8
SBA.4	1/4
SBA.3	3/8
SBA.2	1/2
SBA.34	3/4
SBA.1	1"



Fil. GAS cilind. ISO 228 -  
Cylind. GAS thread ISO 228

### SPO ...

Silenz. bronzo piatto  
Brass flat silencer

Codice - Code	
Mod.	F
SPO.5	M5
SPO.8	1/8
SPO.4	1/4
SPO.3	3/8
SPO.2	1/2
SPO.34	3/4
SPO.1	1"



Fil. GAS cilind. ISO 228 -  
Cylind. GAS thread ISO 228

### SPA ...

Silenz. filo acciaio inox  
Stainless steel wire silencer

Codice - Code	
Mod.	F
SPA.5	M5
SPA.8	1/8
SPA.4	1/4
SPA.3	3/8
SPA.2	1/2
SPA.34	3/4
SPA.1	1"

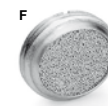


Fil. GAS cilind. ISO 228 -  
Cylind. GAS thread ISO 228

### SPC ...

Silenz. bronzo compatto  
Brass compact silencer

Codice - Code	
Mod.	F
SPC.8	1/8
SPC.4	1/4
SPC.3	3/8
SPC.2	1/2
SPC.34	3/4
SPC.1	1"



Fil. GAS cilind. ISO 228 -  
Cylind. GAS thread ISO 228

### RSSE ...

Reg. di scar. silenziato  
Silenced exhaust regulator

Codice - Code	
Mod.	F
RSSE.8	1/8
RSSE.4	1/4



Fil. GAS cilind. ISO 228 -  
Cylind. GAS thread ISO 228

### RU.SP ...

Rubinetto spurgo  
Discharge valve

Codice - Code	
Mod.	F
RSSP.8	1/8
RSSP.4	1/4
RSSP.3	3/8
RSSP.2	1/2



Fil. GAS cilind. ISO 228 -  
Cylind. GAS thread ISO 228

Componenti Pneumatici  
Pneumatic Components

 **AIRON**  
COMPONENTI PNEUMATICI



**AIRON s.r.l**

Via Marcinelle, 8 45030 Borsea (RO) ITALIA Tel. +39 0425 471 575 Fax +39 0425 404 037  
<http://www.airon-pneumatic.com> e-mail: [info@airon-pneumatic.com](mailto:info@airon-pneumatic.com)

GENNAIO 2008

Realizzazione: **TECNOMEDIA** Padova [www.tecnomedia.bz](http://www.tecnomedia.bz)